

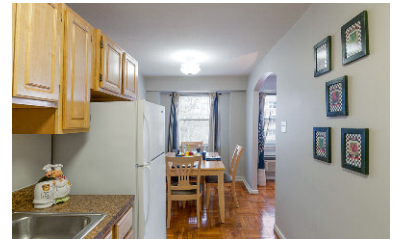
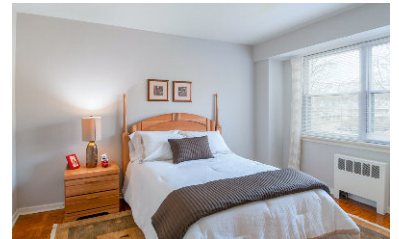


# apartment homes for living

Call today for more details (215) 475-5557

## the metropolitan wynnefield

5000 Woodbine Avenue  
Philadelphia, PA 19131



Our Wynnefield apartments for rent are conveniently located near shopping, gourmet restaurants, and exciting nightlife along City Avenue and neighboring Lower Merion Township, as well as walking distance to Saint Joseph's University. Our 1 and 2 bedroom rental apartments are spacious. University Shuttle buses are available to students during school hours to Bryn Mawr and City Avenues, and an escort Service is available to students of Saint Joseph's to the door of the building after hours during the school year. Those who drive will appreciate we offer garage parking. Looking for an apartment in Wynnefield? Schedule your tour today. metropolitan wynnefield. Apartment homes for living.

### APARTMENT FEATURES

- Huge Floor Plans
- Balconies Available
- Eat-In Kitchens
- Hardwood Flooring
- Window Treatments
- Individually Controlled Air Conditioning
- Intercom System

### COMMUNITY FEATURES

- Cat Friendly
- Elevator Building
- Controlled Access Building
- Laundry Facilities
- Off-Street Parking
- Garage Parking Available
- Furnished Apartments Available
- Professional On-Site Maintenance by Metropolitan Management
- 24-Hour Emergency Maintenance Service

See  
reverse  
for floor  
plans

# the metropolitan wynnefield

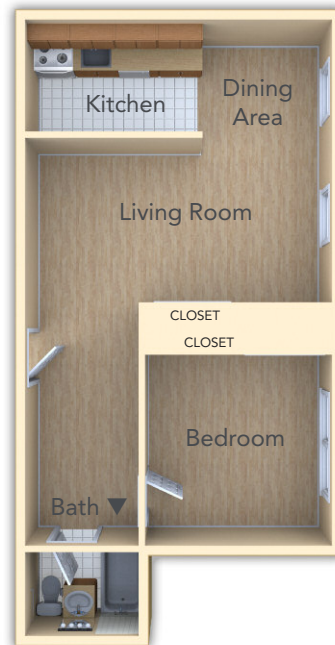
5000 Woodbine Avenue | Philadelphia, PA 19131

For more pictures and details on this apartment and many others, visit [yourMetropolitan.com/wynnefield](http://yourMetropolitan.com/wynnefield)

### Junior One Bedroom



### One Bedroom



## THE METROPOLITAN DIFFERENCE

### CERTIFIED PERSONNEL:

All personnel have met rigorous pre-employment standards - including drug testing, criminal background and DMV checks, and professional reference verification.

### TRAINED PERSONNEL:

All personnel complete training - and have an average tenure of more than 10 years of service.

### 24-HOUR MAINTENANCE:

Our call center is open 24 hours a day, 7 days a week - immediately responding to emergencies and addressing non-emergency issues within 24 hours.\*

### CERTIFIED MOVE IN'S:

All apartment homes must satisfy a rigorous process of inspection and repair - before you move in.

### RESIDENT REFERRAL PROGRAM:

We love referrals - and we reward our residents for referrals.

### RESIDENT FEEDBACK:

We value your feedback - and use your comments to continually improve.

### NO WORRIES LEASE:

We promise you will be satisfied or we will make it right - we are here to address your concerns.

*\*Non-emergency maintenance calls are addressed within 24 hours. Some delay can occur on weekends or holidays, inclement weather or the need for specialized contractors or parts.*

### Two Bedroom



### Two Bedroom, 1.5 bath, Balcony

